



**DAY GALLERY**

# Gallery Selection 1860-1960

Online Exhibition Dec 2023



# Gallery Selection 1860-1960

---

Day Gallery is proud to present a selection of Australian paintings and prints, from 1860 to 1960.

This collection is a representation of our gallery's interest in the history of Australian Art. We hope that you enjoy it.

Featuring a collection of serigraphs by printmaker Ethleen Palmer, and several important 19th century topographical works.







**Murray Griffin (1903-1992)**

In the 1930s Griffin gained a reputation as ‘one of Melbourne’s most innovative modernist printmakers’ (Bunbury 2001, n.p.). Influenced by the Austrian artist Norbertine Bresslern-Roth, he utilised intricate multi-block linocut techniques to produce highly coloured images reminiscent of Japanese prints. His subjects included landscapes, animals, flowers, and figurative works, but he became especially known for his images of birds. (Australian Dictionary of Biography)

### **Considering Pelican 1950**

---

**Colour linocut printed with multiple blocks**

**Image size: 35.7 x 28 cm**

**sheet size: 38.5 x 32 cm**

**Signed and titled in pencil in the lower margin.**

**Edition of 17 of 26**

**Good condition, full sheet. Contemporary light Oak frame**

**The first of three linocuts depicting Pelicans produced by Griffin.**

**Provenance: Australian Galleries (label verso)**

**\$4,400**





**Cannas 1935**  
**Murray Griffin**

---

Colour Linocut printed with Multiple Blocks  
Image size: 28 x 35.4 cm  
Signed and titled in pencil in the lower margin.  
Edition of 16  
Good condition -Framed

**\$ 4,800**



Ethleen Palmer (1906-1958) known as the 'Australian Hokusai' was one of the first Australian women to make a living from her printmaking.

Her printed works are represented in most Australian Public Galleries and have been largely undervalued by collectors in the past decades. She is now beginning to gain the recognition that her contemporaries such as Margaret Preston, Evelyn Syme and Thea Proctor have enjoyed for years. The following works are a representation of her works over a 15 year period between 1935- 1950.

**Ethleen Palmer  
Kookaburra c 1935**

Colour linocut from 5 Blocks

Image size: 13.3 x 11.5 cm

Signed and titled in pencil lower margin

Edition unknown (small)

This work was a preliminary study to the larger linocut of a Kookaburra printed in 1936.

Her notes written on an accompanying sheet state :

"This could be designed for 4 blocks, as it is, it would take 5"

Good condition, framed.

\$6,800







**Ethleen Palmer**  
**Dead Trees 1949**

---

**Serigraph from multiple plates on wove paper**  
**Printed image size: 22.6 x 29.6 cm**  
**Signed and titled in pencil**  
**Edition of 17**  
**Excellent condition, framed.**  
**Another copy is held in the Art Gallery of NSW**

**\$3,300**





**Ethleen Palmer**  
**Herron and Moon 1949**

---

**Serigraph from multiple Stencils on paper**  
**Printed image: 27 x 28 cm**  
**Signed and titled in pencil in the lower margin**  
**Edition of 20**  
**Framed**

**Another copy held in the National Gallery of Australia**  
**Provenance: The estate of the Artist**

**\$3,300**



**Ethleen Palmer  
Peewees 1949**

---

Serigraph from multiple plates on wove paper  
Printed image size: 27 x 27 cm  
Signed and titled in pencil  
Edition of 20  
Excellent condition, framed.

\$3,300







**Ethleen Palmer  
Kookaburra 1949**

---

**Serigraph from multiple plates on wove paper  
Printed image size: 18.9 x 22.8 cm  
Edition size unknown (small)  
Excellent condition, framed.  
From the estate of the artist.**

**\$2,800**





**Ethleen Palmer  
Kestrels 1949**

Serigraph from multiple plates on wove paper  
Printed image size: 29 x 35 cm  
Signed and titled in pencil  
Edition of 20  
Excellent condition, framed.

**\$3,300**



**Ethleen Palmer  
Kangaroos 1949**

Serigraph from multiple plates on wove paper  
Printed image size: 23 x 30 cm  
Signed and titled in pencil  
Edition unknown  
Excellent condition, framed.

\$3,300







**Ethleen Palmer**  
**The Homestead 1937**

Linocut on Japanese paper  
Printed image: 17 x 22 cm  
Signed and titled in pencil in the lower  
margin  
Proof edition

\$5,500





**Ethleen Palmer**  
**Shags c1949**

Serigraph from multiple plates on wove paper  
Printed image size: 18.8 x 22.7 cm  
Excellent condition, framed.  
Provenance: from the estate of the artist

**\$2,800**





**Ethleen Palmer**  
**Two Ducks c1949**

Colour Screen print on paper  
Printed image: 7.1 x 11 cm  
Housed in a light Timber frame  
Provenance: estate of the Artist

\$950





**Ethleen Palmer**  
**Lyrebird c 1949**

Colour Screen print on paper  
Printed image: 8 x 10 cm  
Housed in a light Timber frame  
Signed in letterpress verso  
Provenance: estate of the Artist

\$950





**Ethleen Palmer**  
**Herron c1949**

Colour Screen print on paper  
Printed image: 7.6 x 10.2 cm  
Housed in a light Timber frame  
Signed in letterpress verso  
Provenance: estate of the Artist

\$900





**Ethleen Palmer  
The Pelican c1949**

**Colour Screen print on paper  
Printed image: 8 x 11 cm  
Housed in a light Timber frame  
Signed in Letterpress verso  
Provenance: estate of the Artist**

**\$800**





**Ethleen Palmer**  
**Bush Stone Curlew c1949**

Colour Screen print on paper  
Printed image: 9 x 11.5 cm  
Housed in a light timber frame  
Signed in letterpress verso  
Provenance: estate of the Artist

\$800





**Ethleen Palmer**  
**The Quail c 1949**

Colour Screen print on paper  
Printed image: 9 x 11.5 cm  
Housed in a light timber frame  
Signed in Letterpress verso  
Provenance: estate of the Artist

\$800





**Ethleen Palmer  
Prowling c1949**

**Colour Screen print on paper  
Printed image: 7 x 8 cm  
Housed in a light Timber frame  
Printed monogram verso  
Provenance: estate of the Artist**

**\$750**



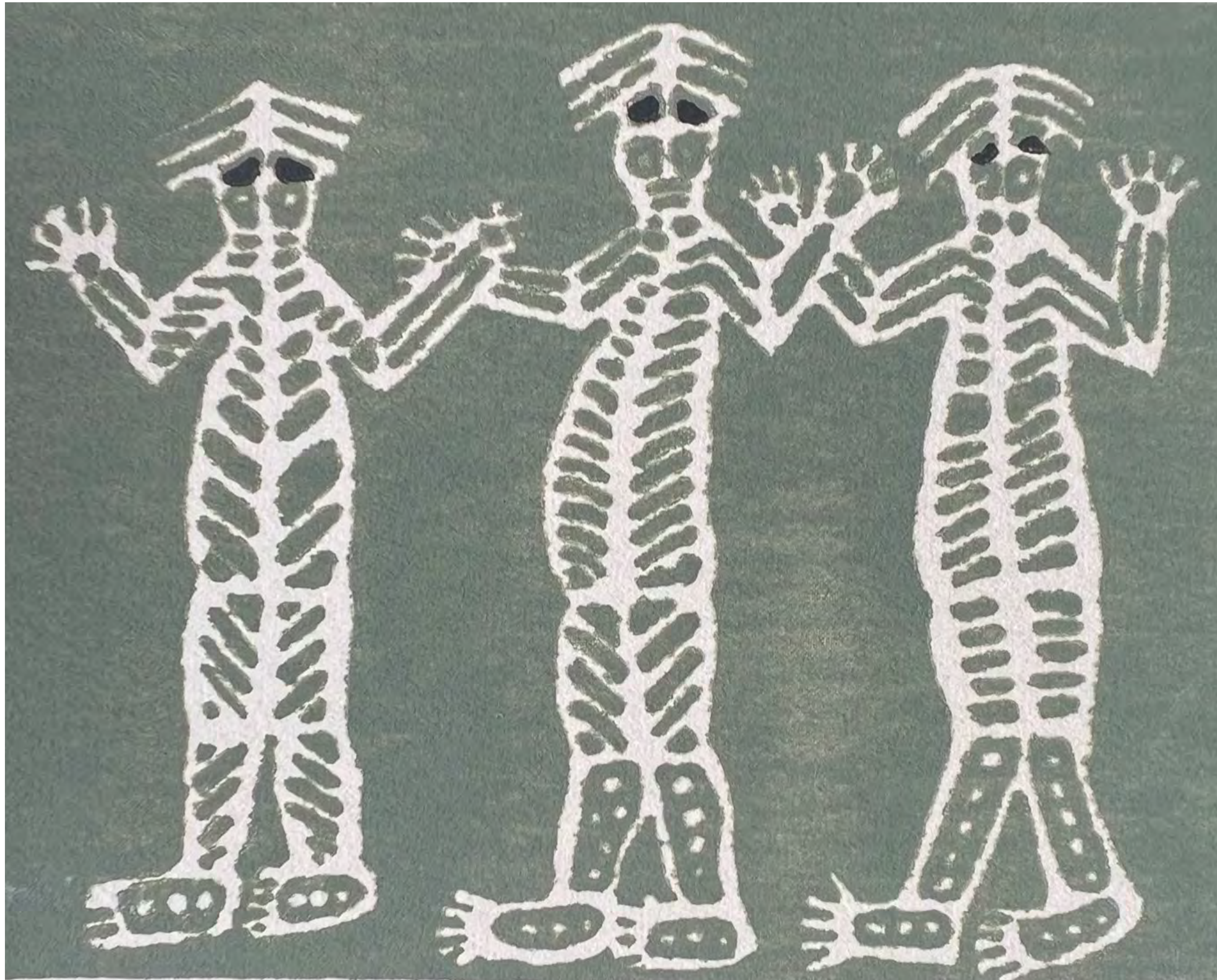


**Ethleen Palmer**  
**Koalas c1949**

Colour Screen print on paper  
Printed image: 8 x 10 cm  
Housed in a light timber frame  
Signed in letterpress verso  
Provenance: estate of the Artist

\$1100





**Ethleen Palmer  
Ritual Dance c1949**

Colour Screen print on paper  
Printed image: 8.1 x 10.5 cm  
Housed in a light Timber frame  
Titled verso- signed in letterpress  
Provenance: estate of the Artist

\$800



**Norah Gurdon (1881-1974)**

**Gurdon was an important contributor to the Australian impressionist movement of the early 20th century. Painting along side the likes of Streeton and McCubbin, her paintings were exhibited at the Royal Academy with acclaim and at the Victorian Artist Society.**

**A talented impressionist painter, Gurdon has been throughly overlooked by collectors.**

**Her works are held in various public state collections.**

**Norah Gurdon  
A Spring Morning c 1928**

---

Oil on canvas on board

55x 28 cm

Signed lower right

original frame: Whitelaw of Melbourne

Label verso -including title

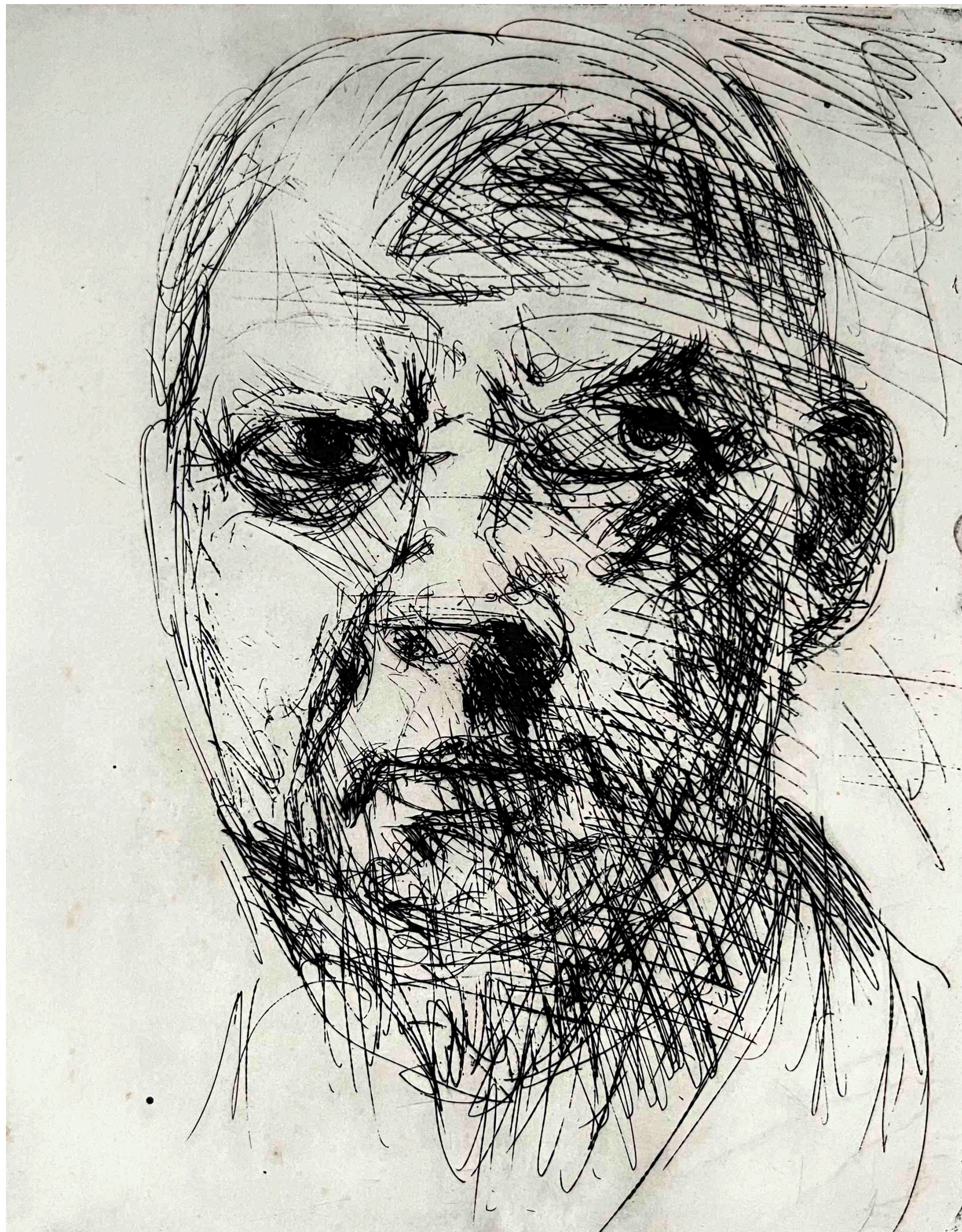
A beautiful example of Gurdon's work En Plein Air

\$6,800

**D**  
**G**







**Arthur Boyd (1920-1999)**  
**Self Portrait c1963**

---

**Etching on paper**  
**Image size: 30.1 x 25 cm**  
**Signed and titled in lower margin in pencil**  
**Edition of 25**

**A rare self portrait by one of Australia's  
cultural icons.**

**\$2800**





**Elizabeth Parsons (1831-1897)**  
Parsons was first woman to be elected to the council of Victorian Academy of Arts. Her topographical works in watercolour received praise by her contemporaries, and today stand as important visual records of areas in Victoria that have undergone major change.

**Elizabeth Parsons  
(St Kilda) 1885**

---

**(St Kilda- Albert Park ) 1885**  
**Watercolour on paper**  
**18.5 x 30 cm**  
**Signed dated lower left**  
**Good overall condition, a vertical discolouration mark through the right hand side is visible.**

**Elizabeth Parsons was living in St Kilda in 1885 when this work was completed. She was know to have been an artists who painted scenes from life.**

**We believe that the work depicts the Former Uniting Church tower in the background alongside Port Philip Bay in the back ground.**

**\$3,800**



**Sydney Harbour and Goat Island c1860**

---

**Attributed to John Skinner Prout**

**The Harbour of Sydney and Goat Island From the North c1860**

**Watercolour on paper  
60 x 91 cm**

**A rare work depicting Goat island. Visible on the left is a sentry tower, and on the right was Sydney's magazine and stone quarry.**

**\$18,000**





**B.E Minns (1863-1937)**  
**Hauling Timber 1929**

---

Watercolour on paper  
30 x 50 cm  
Signed and dated lower left  
Good condition  
Housed in a gold frame

\$5,500





**Edward Roper (1854-1909)**  
**A Mia Mia Victoria**  
**(Dunkeld) 1884**  
**(Djab Warrung people)**

An important painting depicting the Djab Warrung people of the Southern Grampians (Dunkeld) and their shelters.

Oil on canvas  
35 x 45 cm  
Signed and dated lower right

\$45,000





**Ellis Rowan (1848-1922)**

**One of Australia's most famous botanical painters. She travelled widely, bucked social convention and was as stoic as she was talented. Her book, 'The Flower Hunter' outlines her personality and prestigious creative output. An Australian Icon.**

**Ellis Rowan  
Goldenrod c 1890**

---

**Watercolour and Gouache on paper**

**Sheet size: 26 x 17 cm**

**Signed lower left**

**Inscribed next to signature 103 and verso / Nature  
Flower 103 (Possibly an illustration for a publication)**

**The work is in a good original condition.**

**Contemporary light oak frame**

**\$3300**

**This painting bears a resemblance to a watercolor in the  
National Library of Australia depicting yellow flowers in  
the Garden of Ellis Rowan at Derriweit, Mount Macedon.**





**Ellis Rowan**  
**Garden and Wildflowers c1885**

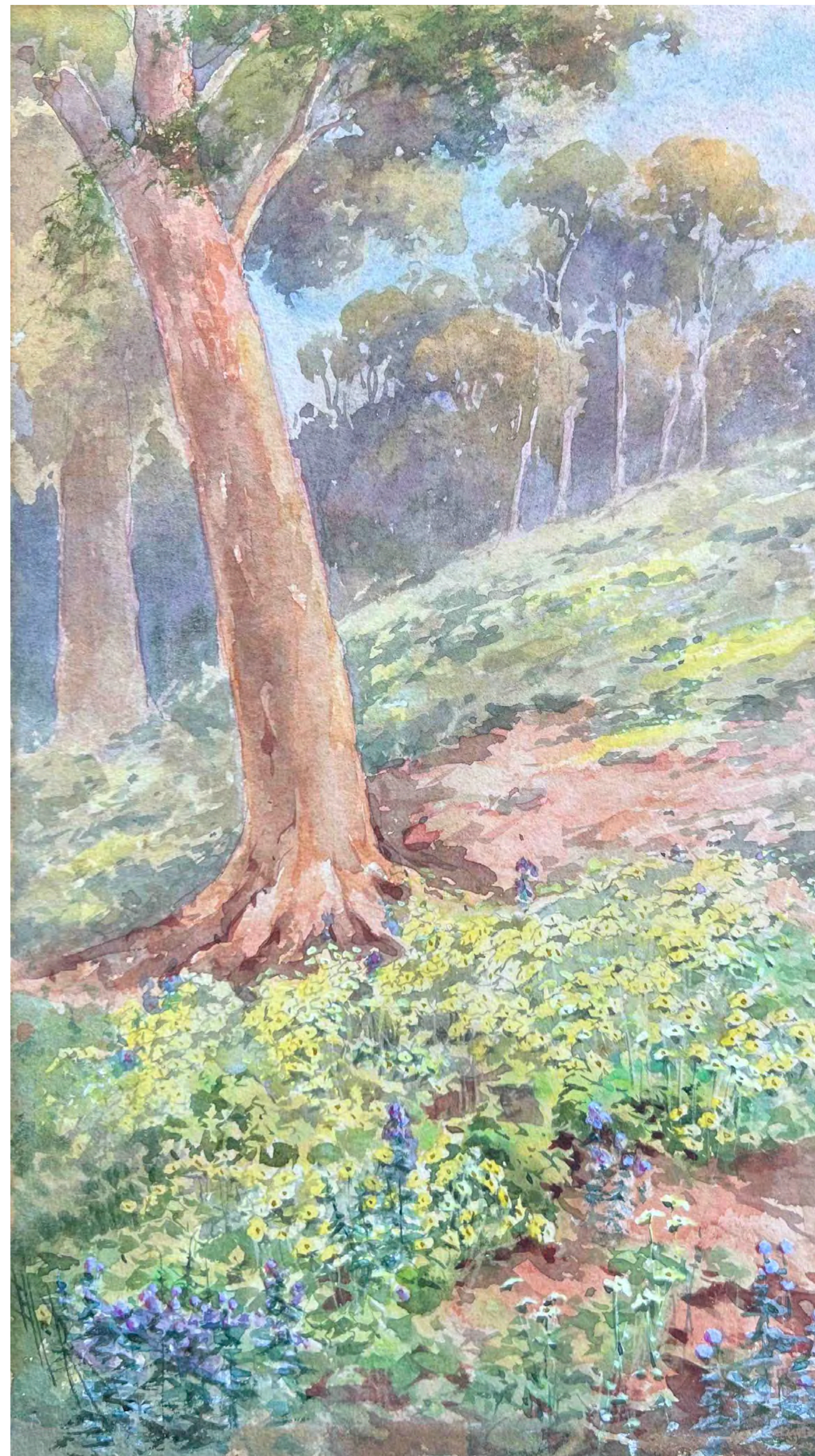
---

**Garden and Wildflowers c 1885**  
**Watercolour and Gouache on paper**  
**Sheet size: 30.5 x 18 cm**  
**Signed lower left**  
**The work is in a good original condition.**

**This work could have been painted on her  
property Derrizeit in Mount Macedon  
Victoria.**

**Contemporary light oak frame**

**\$1850**





**Walter Fallen Bishop (1856-1936)  
Adelaide from Mitcham 1918**

---

**Oil on Canvas**

**Size: 45 x 75 cm**

**Signed and dated lower right**

**The work is in a good original condition.**

**This work is the oil sketch that is related to a watercolour in the Art Gallery of South Australia, titled Adelaide from Mitcham.**

**Reference AGSA:**

**Accession number: 0.1698**

**\$7,800**





**Herbert Raberaba (1920-1980)**  
“Both Henoah and Herbert Raberaba were tribal brothers of Albert Namatjira. Herbert is a powerful painter who displays such feeling and is such a good colourist that his works demand attention”

**Rex Battarbee - Modern Aboriginal Paintings**

**Glen Helen Gorge c1960**  
**Western McDonnell Range**

---

**Watercolour on board**  
**Sheet size: 54 x 74 cm**  
**Signed lower left**  
**The work is in a good original condition.**

**The Hermannsburg watercolour movement could be one of the most important artistic movements in Australian history. Albert Namatjira created a style that would resonate throughout Australian homes. It is likely that that it played a part in pulling down the racial prejudice of White Australia Policy.**

**\$5,500**





**Hall Thorpe (1874-1947)**

Hall Thorpe wanted to bring peace and tranquility to peoples homes.

Hence he created beautiful colour woodcuts for all to enjoy.

**Hall Thorpe**  
**A Summer Bunch c.1920**

---

Colour woodcut on paper  
48 x 33 cm  
Framed

\$1,100





**Hall Thorpe  
Forget Me Nots 1922**

---

**Colour woodcut on paper  
Signed in pencil  
16 x 15 cm  
Timber frame**

**\$750**





**Eileen Mayo (1906-1994)**  
**Spanish Kitchen c 1945**

**The Spanish Kitchen c1945**  
**Colour Lithograph printed**  
**Image size: 35 x 28.3 cm**  
**Sheet Size: 41 x 32.5 cm**  
**Signed , titled and numbered in pencil in the**  
**lower margin**  
**Edition of 25, number 12**  
**Excellent condition- framed**  
**Her work are held in state public collections**

**\$4,400**





# DAY GALLERY

## CONTACT

Helen Day 0424 842 294  
Vince Day 0404 930 120

## ONLINE

info@daygallery.art  
www.daygallery.com.au

## ADDRESS

27-29 Govetts Leap Road  
Blackheath  
NSW 2785

## HOURS

Friday 11am - 4pm  
Saturday & Sunday 11am - 5pm

Or by appointment

**All works in this  
catalogue include  
complimentary delivery  
Australia wide**



**GARFIELD SHAW (1885-1961) - THE JAMISON VALLEY 1927 - ETCHING ON PAPER 25 X 40 CM EDITION OF 40 - \$1650**