



# JANE STAPLEFORD

A Fantastic World

5 - 21 November 2021

DAYGALLERY



# Jane Stapleford

A Fantastic World

## A Fantastic World

Strange times make your mind go to strange places. In my case, those places tend to be fantastical.

In my studio, I can shut out the uncertainties and follies of the world around, focus in on the personalities in my pictures and the magical worlds in which they dwell.

As the child of a Navy Officer, travelling from place to place, I always had to build my own worlds and populate them with friends and creatures to keep me amused in each new environment. The last couple of years of isolation have simply brought my early years back into focus and let me once again revel in the fantastical places I've always lived in my mind.

This exhibition lets me share some of the places I've been visiting and the creatures and landscapes I've encountered there.

Cover image:

No creatures were harmed in the making of Kismet's garden of dreams

Watercolour

34 x 34cm | \$1,600

The Shaman's Rabbit

Watercolour

37 x 28cm | \$1,100



A branch with a mountain view

Watercolour

25 x 17.5cm | \$800



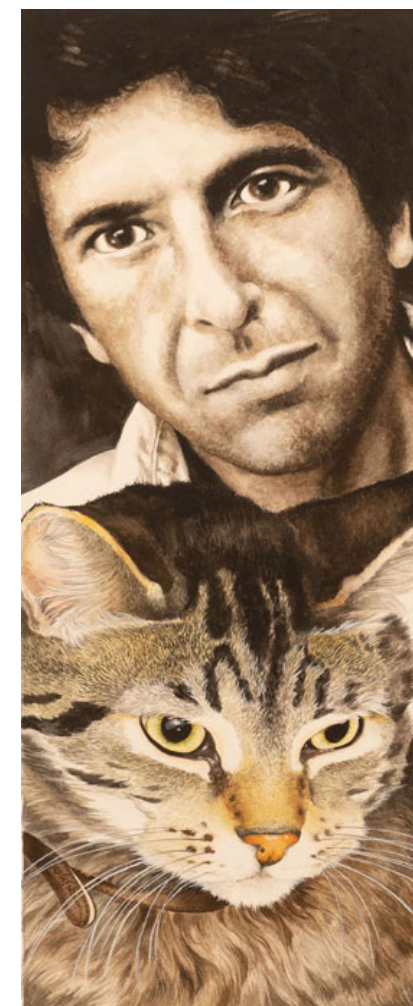
Black hair - a song by Nick Cave  
Watercolour  
40 x 15cm | \$1,300



Bowerbirds  
Watercolour  
39 x 27.5cm | \$1,600



Blue-winged Kookaburra  
Watercolour  
26 x 16cm | \$800



Listening to the songs of Leonard Cohen  
Watercolour  
36.5 x 14cm | \$1,000



Discovering the Library  
Watercolour  
46 x 25cm | \$1,500



Barn Owl  
Watercolour  
25 x 17.5cm | \$700

Enchanted music of the Immortals  
Watercolour  
56 x 35cm | \$2,200



Elfin child  
Watercolour  
19 x 16.5cm | \$500





Gang Gang  
Watercolour  
26 x 16cm | \$800



Somebody left a doll behind in 1880  
Watercolour  
54.5 x 22cm | \$1,800

Emu  
Watercolour  
25 x 17.5cm | \$800



Monkey's timeless magic  
Watercolour  
42 x 23cm | \$1,400



Ancient history  
Watercolour  
38 x 76cm | \$3,600



Hare's harvest  
Watercolour  
25 x 19.5cm | \$900



In the eye of the Emu  
Watercolour  
25 x 17.5cm | \$800



Blackheath duck pond  
Watercolour  
19 x 36cm | \$1,300



Owl and the cabinets of curiosity  
Mixed media and watercolour  
43 x 61 cm | \$3,200



Red tailed Cockatoo  
Watercolour  
26 x 16cm | \$800



Owl's curiosity collection  
Mixed media and watercolour  
56 x 22cm | \$2,000



Parliament of Owls  
Watercolour  
45.5 x 145cm | \$6,800





Is that a Banksy flying by?  
Watercolour  
40.5 x 20.5cm | \$1,200



Raphael suspects there's a monkey  
perched behind him  
Watercolour  
55 x 22cm | \$1,800

Who is that sitting in my chair?  
Watercolour  
44 x 20cm | \$1,400



The bone dog  
Watercolour  
55 x 27.5cm | \$2,200



Rapahel dreams of becoming  
a famous graffiti artist  
Watercolour  
34 x 22.5cm | \$1,100



Bower birds  
Watercolour  
39 x 27.5cm | \$1,700



Sunset on the mountain  
Watercolour  
25 x 42.5cm | \$1,500



The colour red  
Watercolour  
30 x 22.5cm | \$1,400



Kookaburra  
Watercolour  
26 x 16cm | \$800



The pirate's monkey  
Watercolour  
44 x 34.5cm | \$1,800



Top of the mountain  
Watercolour  
25 x 17.5cm | \$800

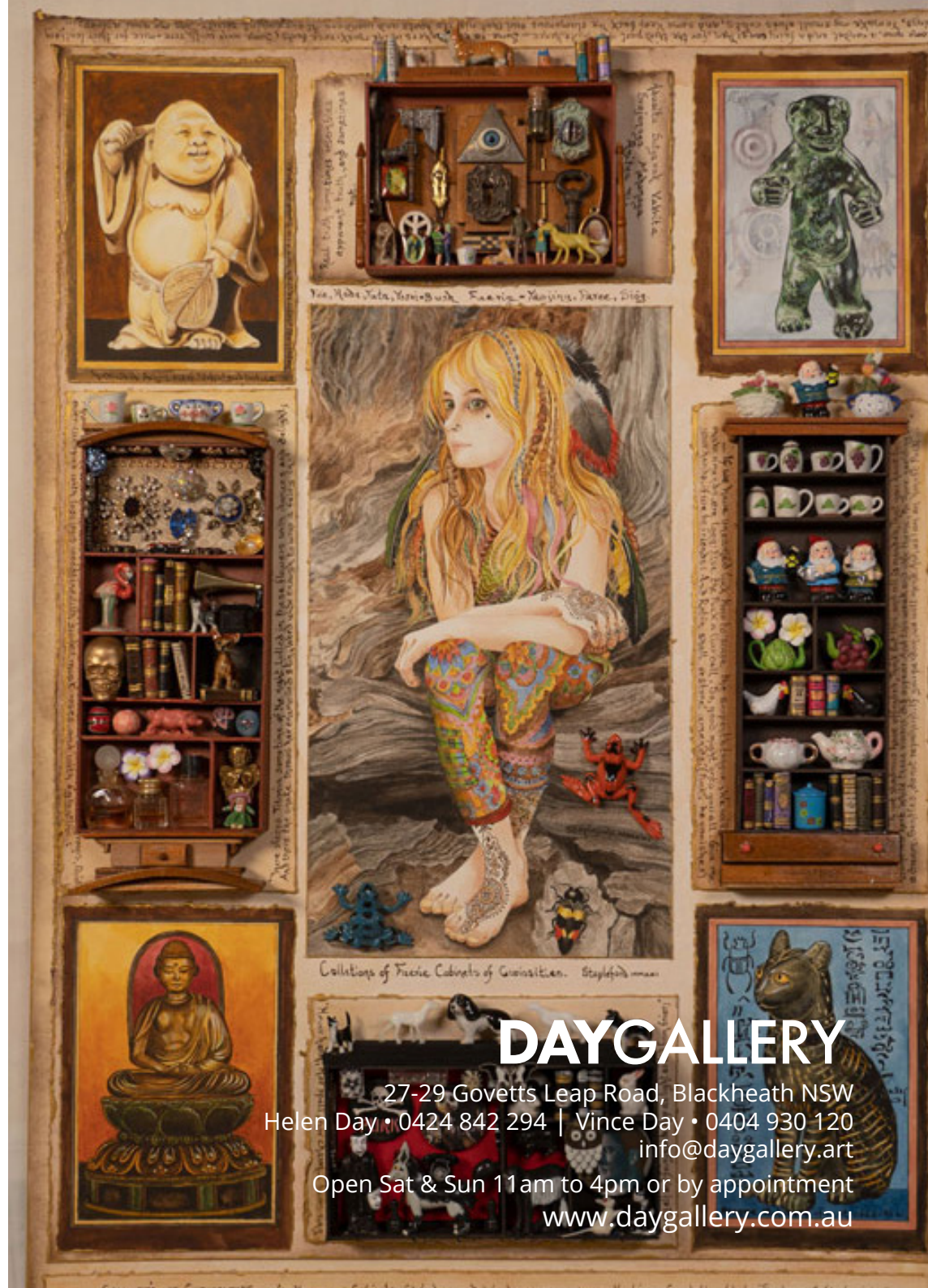


The monkey room  
Watercolour  
54 x 24cm | \$1,800

Tawny Frogmouth  
 Watercolour  
 26 x 16cm | \$800



Fishing Owl. The Curator of the  
 Museum at the end of time  
 Watercolour  
 76 x 26cm | \$2,300



Collections of Fricke Cabinets of Curiosities. Stapleford man

**DAYGALLERY**

27-29 Govetts Leap Road, Blackheath NSW  
 Helen Day • 0424 842 294 | Vince Day • 0404 930 120  
 info@daygallery.art  
 Open Sat & Sun 11am to 4pm or by appointment  
 www.daygallery.com.au